



Temperature range: **-20°C/-10°C**

Refrigerating unit: **Internal**

Refrigerant/Cooling factor: **R404a / R507 / R448 / R449**

Name	ARUBA 1.25	ARUBA 2.5
Code	AB101	AB102
Length [mm]	1385	2635
Height [mm]	1300+/-10	1300+/-10
Depth [mm]	1220	1220
Capacity [dm ³]	112	224
Display area [m ²]	0,85	1,7
Total Display Area (TDA) [m ²]	-	-
Temp. range [°C]	(-20 ± -11°C)	(-20 ± -10°C)
Temp. class	-	-
Climate class	-	-
Energy efficiency class	-	-
Refrigerant	R507 / R449A / R448 / R449	R507 / R449A / R448 / R449
Rated voltage [V]	230/50Hz	230/50Hz
Rated power [W]	1320	2655

Standard equipment

internal freezing aggregate

refrigerant system adapted for R448A / R449A

dynamic cooling (ventilated)

wooden external housing - different colors available (IGLOO pattern book)

glass sides

curved front glass - telescopic lifting system

ecological polyurethane foam insulation

exposition area made of stainless steel prepared for containers (360mm x 165mm) (ARUBA 1.25 = 14 flavours, ARUBA 2.5 = 28 flavours)

worktop - stainless steel

anodised aluminum profiles color gold or silver (IGLOO pattern book)

manual shutter (from the personnel side)

upper interior lighting - fluorescent LED

automatic defrost

automatic condenser vaporization

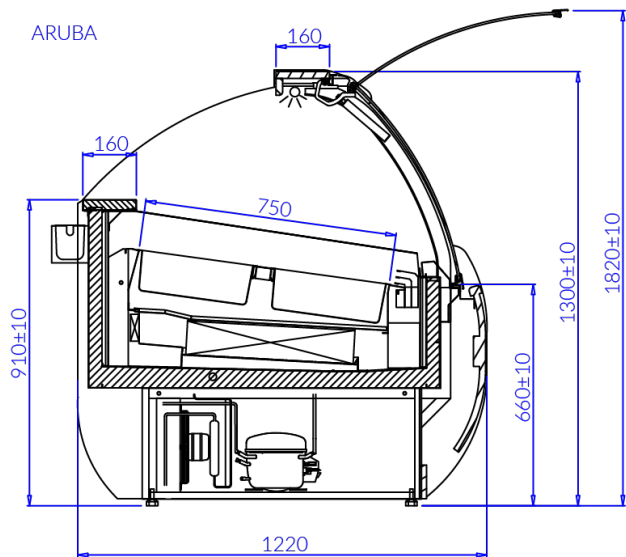
Options

scoop washer container

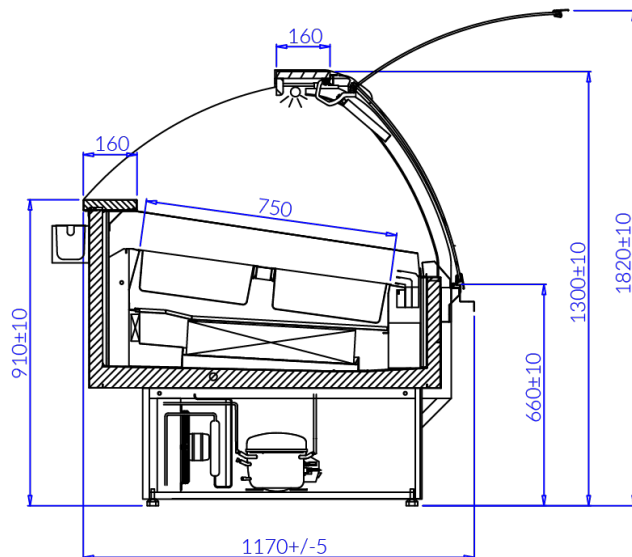
scoop washer container with water flow system

stainless steel container 360x165x120 mm

temperature recorder wire



Rys. 1



Rys. 2