



Temperature range: **3M1(-1/+5°C) / 3M2(-1/+7°C) / 3H1(+1/+10°C)**

Refrigerating unit: **External**

Refrigerant/Cooling factor: **R448A / R449A / R450A / R407F / R404A / R507**

| Name | VARIO 100 L 1.25 | VARIO 100 L 1.88 | VARIO 100 L 2.50 | VARIO 100 L 3.13 | VARIO 100 L 3.75 | VARIO 100 L HEAD |
|--|--|--|--|--|--|--|
| Code | VR130.1000L | VR150.1000L | VR160.1000L | VR170.1000L | VR180.1000L | VR1000EL |
| Length [mm] | 1250 | 1875 | 2500 | 3125 | 3750 | - |
| Height [mm] | 2100+/-15 | 2100+/-15 | 2100+/-15 | 2100+/-15 | 2100+/-15 | 2100+/-15 |
| Depth [mm] | 1000 | 1000 | 1000 | 1000 | 1000 | 1000 |
| Capacity [dm ³] | 1358 | 2037 | 2716 | 3395 | 4074 | 2194 |
| Display area [m ²] | 4,26 | 6,39 | 8,53 | 10,66 | 12,79 | 6,89 |
| Total Display Area (TDA) [m ²] | 2,18 | 3,27 | 4,35 | 5,45 | 6,53 | 3,97 |
| Temp. range [°C] | (+1 ± +10°C) | (+1 ± +10°C) | (+1 ± +10°C) | (+1 ± +10°C) | (+1 ± +10°C) | (+1 ± +10°C) |
| Temp. class | 3H1 | 3H1 | 3H1 | 3H1 | 3H1 | 3H1 |
| Climate class | 3 (25°C ; 60% RH) | 3 (25°C ; 60% RH) | 3 (25°C ; 60% RH) | 3 (25°C ; 60% RH) | 3 (25°C ; 60% RH) | 3 (25°C ; 60% RH) |
| Energy efficiency class | D | D | E | E | E | D |
| Refrigerant | R448A / R449A / R450A / R407F / R404A / R507 | R448A / R449A / R450A / R407F / R404A / R507 | R448A / R449A / R450A / R407F / R404A / R507 | R448A / R449A / R450A / R407F / R404A / R507 | R448A / R449A / R450A / R407F / R404A / R507 | R448A / R449A / R450A / R407F / R404A / R507 |
| Refrigerant | - | - | - | - | - | - |
| Rated voltage [V] | 230/50Hz | 230/50Hz | 230/50Hz | 230/50Hz | 230/50Hz | 230/50Hz |
| Rated power [W] | 81 | 109 | 137 | 177 | 193 | - |

Standard equipment

innovative system of the upper assembly profile

powered only by external aggregate

device prepared for multiplexing

dynamic cooling (with double air curtain)

energy - saving electronically commutated fans

mechanical expansion valve

front bottom panel made of coated steel - different colors available (Igloo pattern book)

front top panel made of coated aluminum profile - different colors available (Igloo pattern book)

base plinth made of stainless steel with a floor seal

interior and exposition shelves made of coated steel - different colors available (Igloo pattern book)

5 levels of display shelves with possibility to change the hanging height and angle + lower base shelf

price slats - selectable colour (IGLOO colour chart)

modern upper LED lighting (lighting colour options: white confectionery, pink)

electronic temperature controller with digital display (IGLOO)

siphoned condensate drain - diameter of the connector pipe \varnothing 40

refrigerant system adapted for one of the following media - R448a / R449a / R450a / R407F / R404A/R507 / R290

bottom outlets of the cooling circuitry

Options

side panels made of double combined tempered glass or double combined mirror

insulated side panels made of coated steel with a glass mirror on the inside - different colors available (Igloo pattern book)

full insulated side panels made of stainless steel with a mirror glass on the inside

custom colour of full insulated sides (after consultation with the Igloo sales department)

custom front panel color (after consultation with the IGLOO Sales Department)

custom colors of device interior and exposition shelves (after consultation with the Igloo Sales Department)

custom upper front panel colour (after consultation with the Igloo sales department)

device interior and exposition shelves made of stainless steel

device interior and exposition shelves made of acid - resistant stainless steel

additional shelf illumination - LED light (available colors : white, confectionery or meat)

good securing fence

top mirrors

powder painted evaporator

fixed partition made of PETG (plexiglass)

front buffer with stainless steel profile

display space thermometer

electronic temperature regulator with the registration system (Igloo)

temperature recorder wire

no thermostat - 2 x temperature sensor NTC [10k Ω]

automatic defrost (electric heaters)

electronic expansion valve*

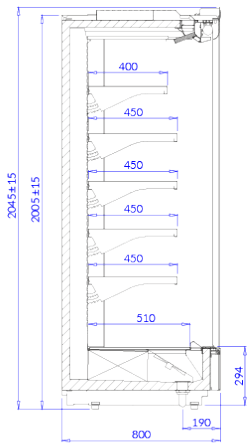
night roller blind - electric

night roller blind - manual

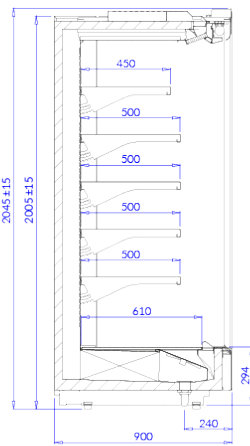
cooling system adopted to factor R744 (CO₂) (only with electronic expansion valve)*

top outlets of the cooling circuitry

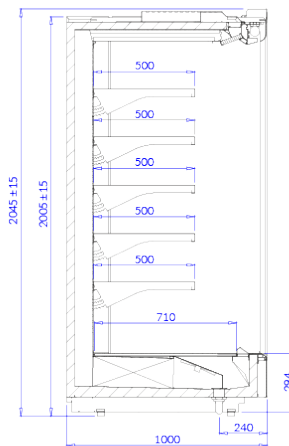
*more information - IGLOO sales department



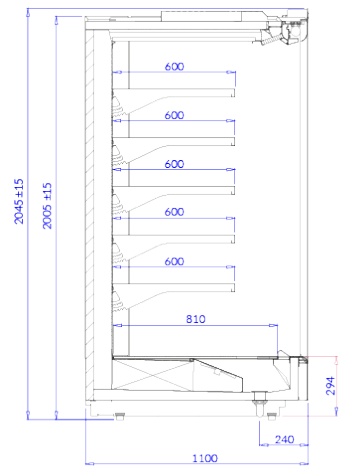
VARIO 800



VARIO 900



VARIO 1000



VARIO 1100